



Intercultural Development Inventory[®]

Group Administrator Report

ORGANIZATIONAL VERSION

Prepared for:

Exemplar Group

Prepared by:

IDI, LLC

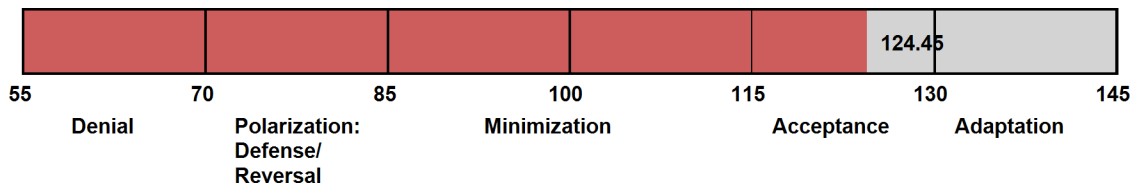
IDI, LLC

<http://idiinventory.com/>
support@idiinventory.com

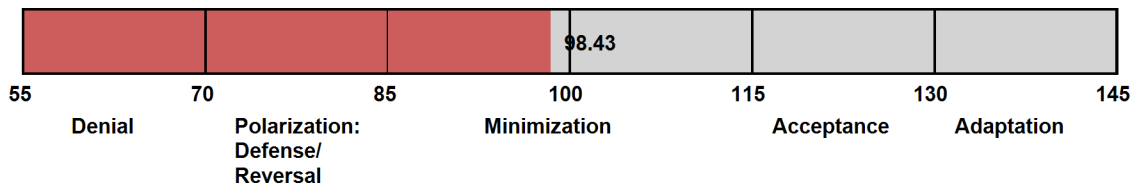
The Intercultural Development Inventory[®] (IDI[®]) is protected by copyright and is the proprietary property of Mitchell R. Hammer, Ph.D., and IDI LLC. Intercultural Development Inventory and IDI are registered trademarks of Mitchell R. Hammer, Ph.D., and IDI, LLC. You may not use, copy, display, distribute, modify, or reproduce any of the trademarks found in this Report except as expressly authorized by IDI, LLC.

IDI Group Profile

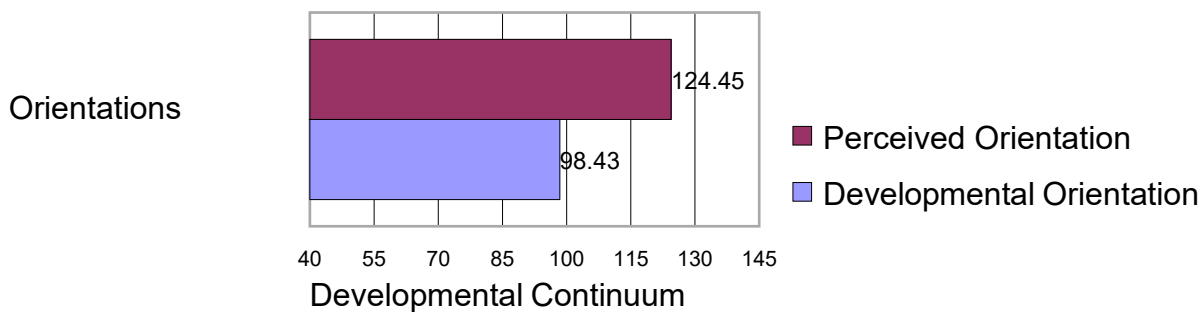
Perceived Orientation (PO)



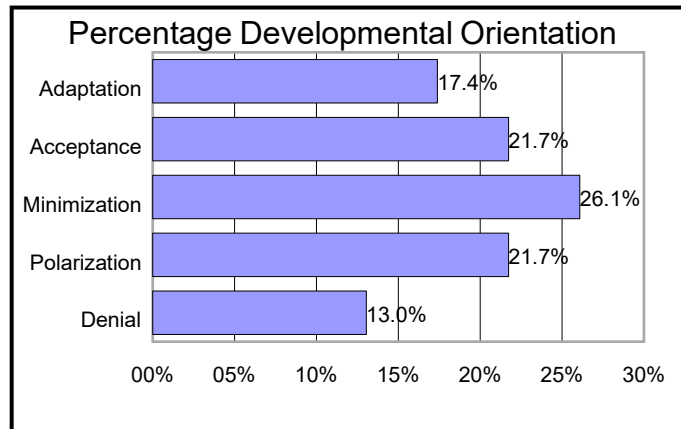
Developmental Orientation (DO)



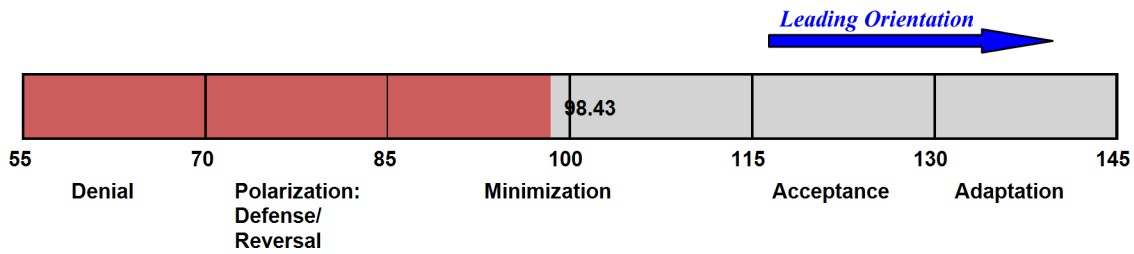
Orientation Gap (OG)



Range of Developmental Orientations

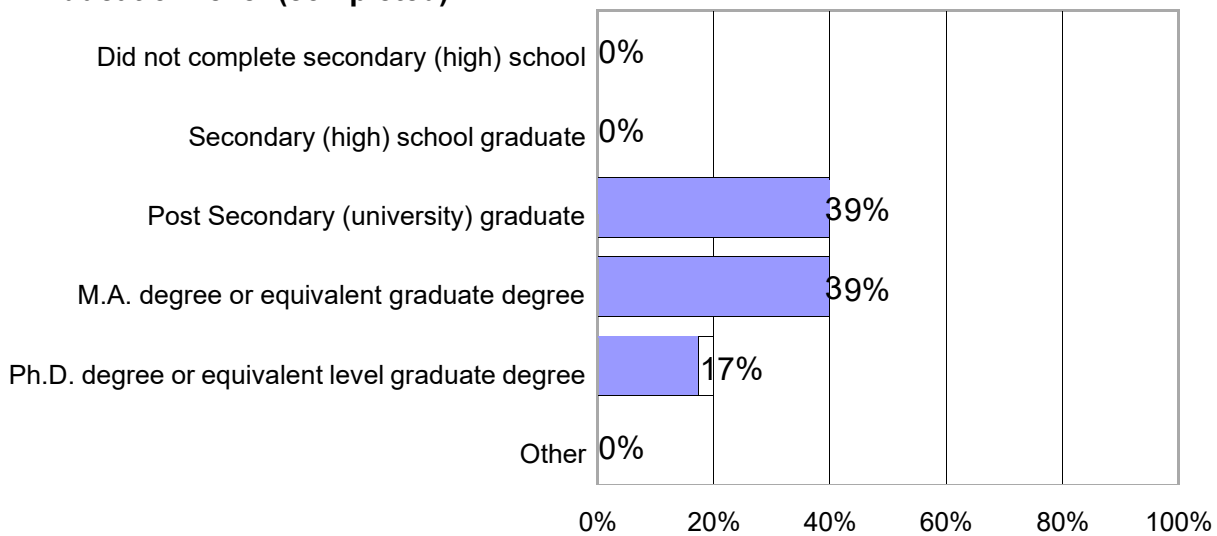


Leading Orientations

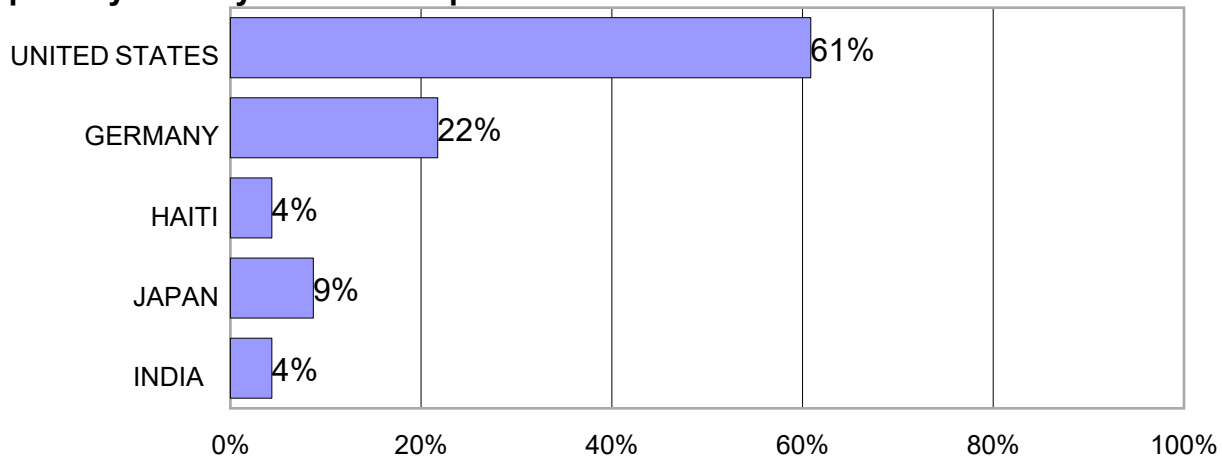


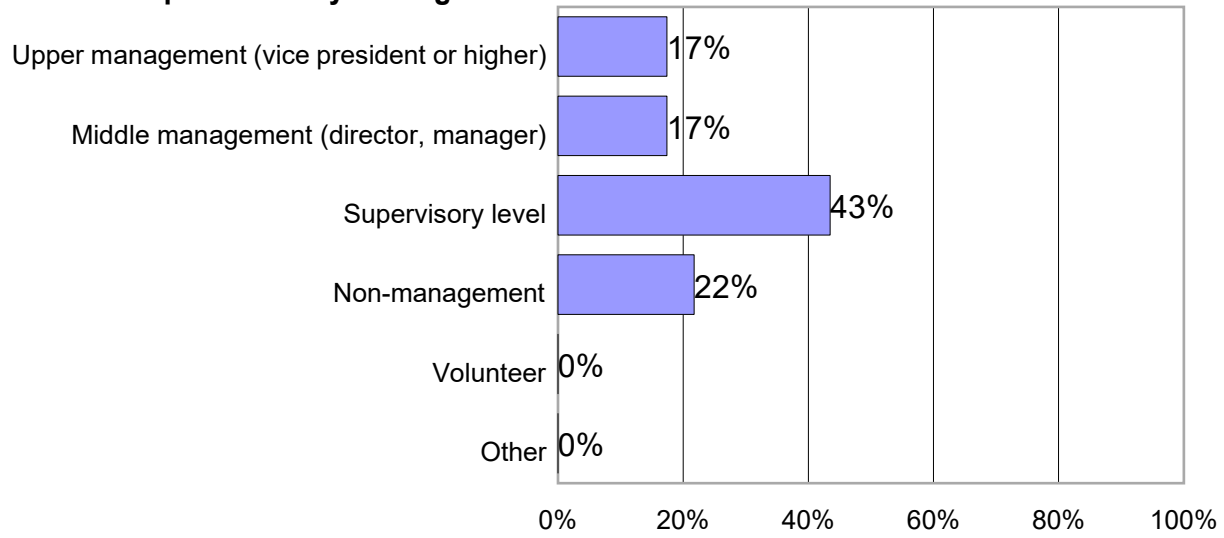
Demographic Information

1. Education level (completed):



2. Country of citizenship (passport country). Indicate the country that you consider your primary country of citizenship.



3. Current position in your organization:

Scale Statistics

| | # of Respondents | Mean Score | Standard deviation |
|---|------------------|------------|--------------------|
| Perceived Orientation (PO) | 23 | 124.45 | 12.74 |
| Developmental Orientation (DO) | 23 | 98.43 | 28.31 |
| Orientation Gap Score (+ = PO greater than DO; - = DO greater than PO) | 23 | 26.02 | 15.65 |

Demographic Summary

| | # of Respondents | % of Respondents |
|---|------------------|------------------|
| Education level (completed): | | |
| Other | 0 | 0.00% |
| Ph.D. degree or equivalent level graduate degree | 4 | 17.39% |
| M.A. degree or equivalent graduate degree | 9 | 39.13% |
| Post Secondary (university) graduate | 9 | 39.13% |
| Secondary (high) school graduate | 0 | 0.00% |
| Did not complete secondary (high) school | 0 | 0.00% |
| Country of citizenship (passport country). Indicate the country that you consider your primary country of citizenship. | | |
| INDIA | 1 | 4.35% |
| JAPAN | 2 | 8.70% |
| HAITI | 1 | 4.35% |
| GERMANY | 5 | 21.74% |
| UNITED STATES | 14 | 60.87% |
| Current position in your organization: | | |
| Other | 0 | 0.00% |
| Volunteer | 0 | 0.00% |
| Non-management | 5 | 21.74% |
| Supervisory level | 10 | 43.48% |
| Middle management (director, manager) | 4 | 17.39% |
| Upper management (vice president or higher) | 4 | 17.39% |